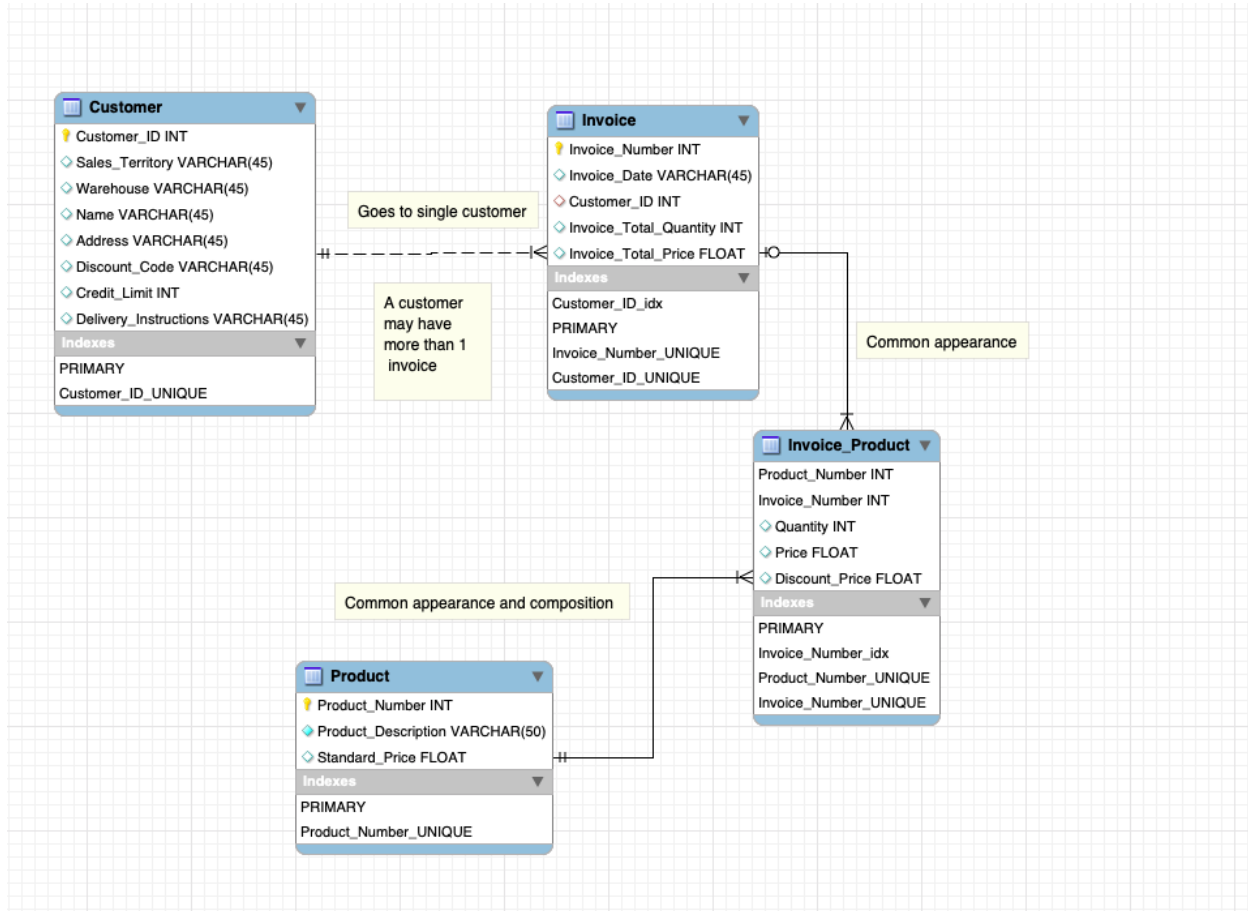


## Data Model:



## CODE PORTION:

```
-- MySQL Script generated by MySQL Workbench  
-- Sat Oct 13 22:36:58 2018  
-- Model: New Model   Version: 1.0  
-- MySQL Workbench Forward Engineering
```

```
SET @OLD_UNIQUE_CHECKS=@@UNIQUE_CHECKS, UNIQUE_CHECKS=0;  
SET @OLD_FOREIGN_KEY_CHECKS=@@FOREIGN_KEY_CHECKS, FOREIGN_KEY_CHECKS=0;  
SET @OLD_SQL_MODE=@@SQL_MODE, SQL_MODE='TRADITIONAL,ALLOW_INVALID_DATES';
```

```
-----  
-- Schema ZormeneKinanee_Homework2  
-----
```

```
-----  
-- Schema ZormeneKinanee_Homework2  
-----
```

```
CREATE SCHEMA IF NOT EXISTS `ZormeneKinanee_Homework2` DEFAULT CHARACTER SET utf8  
;  
USE `ZormeneKinanee_Homework2` ;
```

```
-----  
-- Table `ZormeneKinanee_Homework2`.`Product`  
-----
```

```
CREATE TABLE IF NOT EXISTS `ZormeneKinanee_Homework2`.`Product` (  
  `Product_Number` INT NULL AUTO_INCREMENT,  
  `Product_Description` VARCHAR(50) GENERATED ALWAYS AS (),  
  `Standard_Price` FLOAT UNSIGNED NULL,  
  PRIMARY KEY (`Product_Number`),  
  UNIQUE INDEX `Product_Number_UNIQUE` (`Product_Number` ASC))  
ENGINE = InnoDB;
```

```
-----  
-- Table `ZormeneKinanee_Homework2`.`Customer`  
-----
```

```
CREATE TABLE IF NOT EXISTS `ZormeneKinanee_Homework2`.`Customer` (  
  `Customer_ID` INT NULL AUTO_INCREMENT,  
  `Sales_Territory` VARCHAR(45) NULL,  
  `Warehouse` VARCHAR(45) NULL,  
  `Name` VARCHAR(45) NULL,  
  `Address` VARCHAR(45) NULL,  
  `Discount_Code` VARCHAR(45) NULL,  
  `Credit_Limit` INT NULL,  
  `Delivery_Instructions` VARCHAR(45) NULL,  
  PRIMARY KEY (`Customer_ID`),  
  UNIQUE INDEX `Customer_ID_UNIQUE` (`Customer_ID` ASC))  
ENGINE = InnoDB;
```

```
-----  
-- Table `ZormeneKinanee_Homework2`.`Invoice`  
-----
```

```
CREATE TABLE IF NOT EXISTS `ZormeneKinanee_Homework2`.`Invoice` (  
-----
```

```

`Invoice_Number` INT NULL,
`Invoice_Date` VARCHAR(45) NULL,
`Customer_ID` INT NULL AUTO_INCREMENT,
`Invoice_Total_Quantity` INT NULL,
`Invoice_Total_Price` FLOAT NULL,
INDEX `Customer_ID_idx` (`Customer_ID` ASC),
PRIMARY KEY (`Invoice_Number`),
UNIQUE INDEX `Invoice_Number_UNIQUE` (`Invoice_Number` ASC),
UNIQUE INDEX `Customer_ID_UNIQUE` (`Customer_ID` ASC),
CONSTRAINT `Customer_ID`
  FOREIGN KEY (`Customer_ID`)
  REFERENCES `ZormeneKinanee_Homework2`.`Customer` (`Customer_ID`)
  ON DELETE NO ACTION
  ON UPDATE NO ACTION)
ENGINE = InnoDB;

```

```

-----
-- Table `ZormeneKinanee_Homework2`.`Invoice_Product`
-----

```

```

CREATE TABLE IF NOT EXISTS `ZormeneKinanee_Homework2`.`Invoice_Product` (
  `Product_Number` INT NULL AUTO_INCREMENT,
  `Invoice_Number` INT NULL,
  `Quantity` INT UNSIGNED NULL,
  `Price` FLOAT UNSIGNED NULL,
  `Discount_Price` FLOAT UNSIGNED NULL,
  PRIMARY KEY (`Product_Number`, `Invoice_Number`),
  INDEX `Invoice_Number_idx` (`Invoice_Number` ASC),
  UNIQUE INDEX `Product_Number_UNIQUE` (`Product_Number` ASC),
  UNIQUE INDEX `Invoice_Number_UNIQUE` (`Invoice_Number` ASC),
  CONSTRAINT `Product_Number`
    FOREIGN KEY (`Product_Number`)
    REFERENCES `ZormeneKinanee_Homework2`.`Product` (`Product_Number`)
    ON DELETE NO ACTION
    ON UPDATE NO ACTION,
  CONSTRAINT `Invoice_Number`
    FOREIGN KEY (`Invoice_Number`)
    REFERENCES `ZormeneKinanee_Homework2`.`Invoice` (`Invoice_Number`)
    ON DELETE NO ACTION
    ON UPDATE NO ACTION)
ENGINE = InnoDB;

```

```

SET SQL_MODE=@OLD_SQL_MODE;

```

```
SET FOREIGN_KEY_CHECKS=@OLD_FOREIGN_KEY_CHECKS;  
SET UNIQUE_CHECKS=@OLD_UNIQUE_CHECKS;
```

## **Assumptions:**

It was to my understanding that foreign keys were to be made to match commonalities between entities.